



SML

GEOSPATIAL

A SML Group Company



"Precision in every measurement,
excellence in every survey"



**20 + surveys
offered**



**30+ dedicated
employees**



**4 strategically
located offices**



**An accredited and
experienced team
of surveyors**



PROVIDING GEOSPATIAL SURVEYS FOR OVER 20 YEARS!

SML Geospatial is a surveying provider consisting of four expert divisions that have been strategically positioned across the United Kingdom and Ireland.

With a strong focus on quality, customer satisfaction and the latest cutting-edge technology, SML Geospatial offers a comprehensive range of specialised surveying services, catering to diverse industries and sectors.

Each of our divisions are strategically located to ensure maximum coverage and efficiency,

Our team is made up of the following companies:

- Ratcliff Land Surveys
- Landmark Surveys Wales
- Geo-Info
- Drilline GPR Surveys



MISSION STATEMENT:

"To be the unrivalled choice for individuals and businesses seeking a comprehensive range of services. We remain committed to staying ahead of market trends, embracing emerging technologies, and expanding our service portfolio to stay relevant in an ever-evolving landscape."

OUR WIDE RANGE OF **SERVICES:**



Underground
Utility Surveys



Measured
Building Surveys



Specialist
Surveys



Monitoring
Surveys



Topographical
Surveys



CCTV Drainage
Surveys



CAD Services

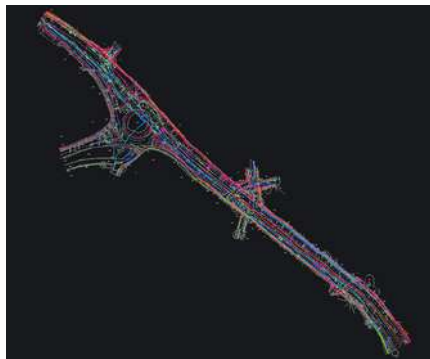
UNDERGROUND UTILITY SURVEYS

SML Geospatial recognises the critical importance of gaining a comprehensive understanding of what lies beneath the ground before commencing any construction or civil engineering project. Through advanced underground utility surveys, our clients are given the valuable opportunity to 'see the unknown', providing a clear advantage during project execution.

By revealing the hidden complexities of underground utilities and structures, our team ensures that clients have the essential information needed to make informed decisions—helping to prevent costly delays and potentially hazardous complications.

OUR SERVICES:

- PAS 128 Utility Mapping Surveys
- GPR Survey
- EML Survey
- Service Avoidance Surveys / Permit To Dig



TOPOGRAPHICAL SURVEYS

Our teams have extensive experience delivering topographical surveys (also referred to as land surveys) to some of the biggest clients across the UK and Ireland. We can help provide accurate and detailed surveys that meet the specific needs of our clients. From large-scale infrastructure projects to residential developments, our land survey services have consistently exceeded expectations and helped our clients make informed decisions about their land usage and development plans.

Our data is collected using modern survey techniques including Robotic Total Stations, GPS receivers, and Laser Scanners. These advanced technologies allow for precise and efficient data collection, enabling us to accurately map and measure landscapes with unprecedented detail and accuracy. The collected data may be presented in many formats from a simple paper plan to a full Three Dimensional (3D) digital model depending on the client's requirements.

OUR SERVICES:

- Hydrographic Surveys
- Topographical Surveys
- Land and Boundary Surveys
- Setting Out



MEASURED BUILDING SURVEYS

Measured building surveys are an important part of any renovation or re-modelling project, offering architects, designers, and other construction professionals, as well as homeowners, with a precise 2D or 3D representation of a building. These surveys provide vital information on the exact dimensions, layout, and structure of a building, enabling professionals to make informed decisions about design and construction plans.

At SML Geospatial, our team takes great pride in delivering highly accurate measured building surveys that cater to a variety of client needs. Whether clients require detailed scans or a more general overview, we are able to provide customised surveys that meet their unique specifications.

We often provide building elevations and cross sections in conjunction with a floor plan survey. The level of details surveyed is determined by our client and varies from minimal/basic layout details, to comprehensive architectural features.



CCTV/DRAINAGE SURVEYS

Our teams also specialise in providing first-class CCTV surveys for pipelines and other enclosed structures across the whole of the UK and Ireland.

Our highly trained surveying teams are equipped with the skills and knowledge necessary to accurately locate and analyse the conditions of drainage pipes, in order to generate comprehensive condition assessments. Whether you have a small diameter pipe or a large one, we have the tools and expertise to get the job done efficiently and effectively.

We take pride in our ability to offer drainage services across the UK, spanning from the bustling cities to the quiet countryside. With teams located in various regions, we are equipped to tackle any drainage issue that may arise, no matter the location.

OUR SERVICES:

- Location Surveys
- Condition Surveys



SPECIALIST SURVEYS

Throughout our divisions, we can offer a wide range of specialist survey services to our clients, utilising cutting-edge technologies and techniques that have been developed over the last 20 years.

With our array of industry leading Ground Penetration Radar fleet, our skilled specialists are equipped to provide accurate and detailed data to meet the unique needs of each project. Our commitment to innovating surveying technology ensures that our clients receive the most comprehensive and reliable information possible.

With experience working with some of the biggest rail clients across the UK and Ireland, SML Geospatial have emerged as one of the leading survey specialists.

OUR SERVICES:

- Rail Surveys
- Pavement Analysis & Concrete Surveys
- Void Surveys
- Mobile Mapping



CAD SERVICES

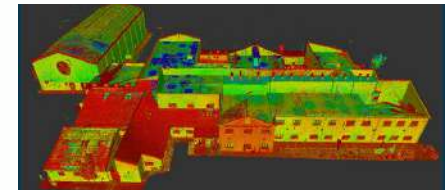
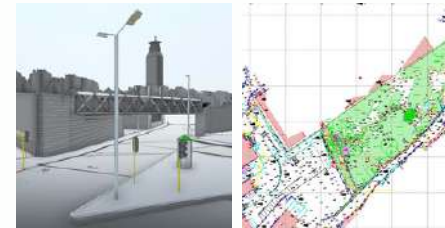
Our CAD team has over 15 years of experience delivering a wide range of projects to clients across the UK and Ireland. With a growing workforce and access to the latest software, our team is equipped to provide any CAD service you may require. From drafting and design to 3D modelling and visualisation, our experts have the knowledge and skills to bring your ideas to life with precision and efficiency.

What do you get with us?

- Maximized Return on Investment
- Confidentiality
- We get it right, first time
- Minimal corrections (Robust Quality check procedure).
- Single Point of contact resulting in punctual delivery

OUR CAD SERVICES:

- Scanto2D(FloorPlans,Elevations,Sections,CHL,RCP)
- ScantoBIM(3D&4D)
- 3DRevitModelling(LOD300to450)
- ScantoMEP
- StructuralRevitModelling
- 3DVisualization&Rendering
- TopographicalCAD(2D&3D)



MONITORING SURVEYS

At SML Geospatial, we provide a diverse range of Monitoring Surveys designed to support a wide array of projects, offering tailored solutions to meet the unique needs of each client.

Our services include several advanced techniques, such as precise level monitoring using an LS15 level to ensure highly accurate measurements, as well as target monitoring with glass targets for high-precision applications, or reflective tape targets for projects requiring lower accuracy.

We also specialise in crack monitoring to track structural integrity and remote tilt sensor monitoring to assess and detect any shifts or tilts in structures over time. Each of these monitoring services can be customised to suit specific project requirements, ensuring that the data collected is both reliable and relevant.



OUR COVERAGE

Our dedicated divisions at SML Geospatial are strategically located across Scotland, Wales, The South East and The Midlands, allowing us to bring our exceptional services closer to our valued clients.

Our central hub and head office, based in the city of Leicester, serves as the heart of our operations, driving our commitment to excellence and enabling seamless coordination among our divisions.

With our nationwide presence, we proudly deliver tailored solutions and unrivalled customer satisfaction to our clients across the United Kingdom.





HEAD OFFICE

SML Geospatial

8 Garden Street, Thurmaston
Leicester, Leicestershire
England
LE4 8DS

GET IN TOUCH WITH OUR SALES TEAM!



01733 3974184



contact@sml-geospatial.co.uk

DIVISIONS

Ratcliff Land & Engineering Surveys

Unit 31,
Westwood Industrial Estate
Peterborough
PE3 7PR

Geo-Info

15 Cromarty Campus
Liberty House,
Rosyth
KY11 2YB

Landmark Surveys Wales

Unit 2,
66-70 Morfa Road
Swansea
SA1 2EF

ACCREDITATIONS

